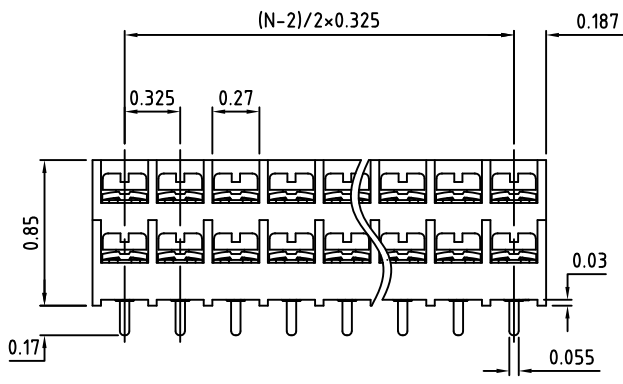
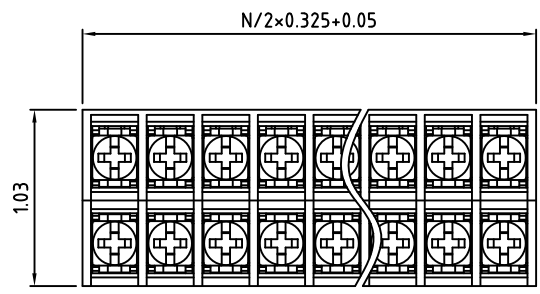
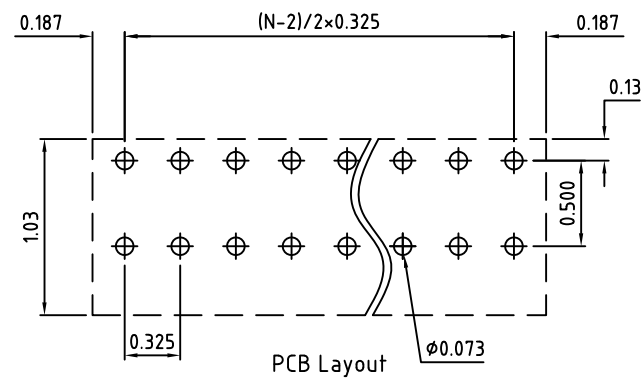
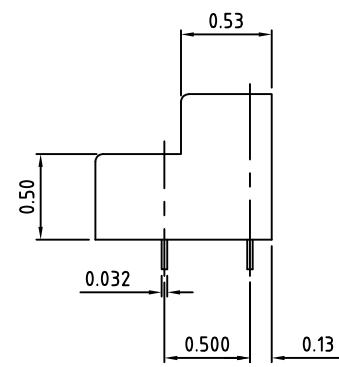


RoHS Compliant	Rev.	ECO#	Date	By
	D	1509-0522	05/24/22	MWP



N=Number of Positions

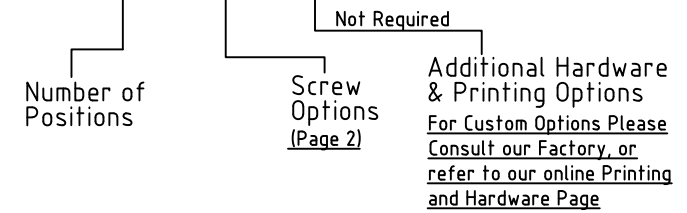


PCB Layout

Material:	
Contact Solder Pin:	Brass, Tin Plated
Insulating Body:	Polycarbonate, UL94V-0, Black
Terminal Screw:	#6-32, Combo Head
Electrical	
Voltage Rating:	300 VAC
Current rating:	20 AMPS
Wire Range:	12-24 AWG
Withstand Voltage:	1500 VAC, Test time 60 seconds
Mechanical	
Torque:	10.0 lbs-in. Max.
Operating Temperature:	-33°C to +120°C -27°F to +248°F
Soldering Temperature:	260°C, 500°F for 5 seconds max.
Safety Approval:	CSA US

Part Number Configuration

5503-XX-N-XX-XXXX



Additional Hardware & Printing Options
For Custom Options Please Consult our Factory, or refer to our online Printing and Hardware Page

All Dimensions in Inches

Page 1 of 2

Max Number of Positions = 12 Position x 2 Rows = 24

TITLE: 0.325" SPACING, BARRIER BLOCK, DUAL LEVEL

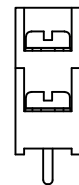
Tolerance: HUND.±.02 THOU.±.000 FRACT.±1/16 ANGLE±1°	SCALE	THIS IS A CONFIDENTIAL DRAWING AND MUST BE TREATED AS SUCH. NO DISTRIBUTION IS ALLOWED WITHOUT WRITTEN APPROVAL BY EB Y ELECTRO INC.	 PLAINVIEW, NY 11803				
	DRAWN MWP			DATE 11/02/10	SIZE A	DRAWING NUMBER: 5500-0001	REV. D
	CHECKED			DATE			
APPROVED	DATE						

IMPORTANT DISCLAIMER: All information provided on this print is for reference. Always perform your own tests and acquire samples and further information to determine product suitability. While we make effort to provide accurate information, we cannot be responsible for errors either of omission or typographical. EB Y Electro, Inc. assumes no responsibility for the use or suitability of any product. All products and specifications are subject to change without prior written notice.

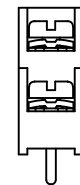
RoHS Compliant	Rev.	ECO#	Date	By
	D	1509-0522	05/24/22	MWP

Available Screw Options

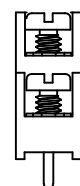
- 00 - No Screws
- 01 - Steel, Zinc Plated,
- 02 - Steel, Zinc plated, w/ Washer
- 03 - Brass, Nickel Plated
- 04 - Brass, Nickel Plated, w/ Washer
- 11 - Steel, Zinc Plated, Captive
- 12 - Steel, Zinc Plated, Captive, w/ Washer
- 13 - Brass, Nickel Plated, Captive
- 14 - Brass, Nickel Plated, Captive, w/ Washer
- 21 - Steel, Zinc Plated, Captive, Wire Ready
- 22 - Steel, Zinc Plated, Captive, Wire Ready, w/ Washer
- 23 - Brass, Nickel Plated, Captive, Wire Ready
- 24 - Brass, Nickel Plated, Captive, Wire Ready, w/ Washer
- 46 - Steel, Zinc Plated, Thread Interrupt, Wire Ready, w/ Washer



Screw Fully Seated
01, 03, 11, 13



Screw With Washer Fully Seated
02, 04, 12, 14



Screw in Wire Ready Position.
21, 23



Screw With Washer in Wire Ready Position.
22, 24, 46

All Dimensions in Inches

Page 2 of 2

Max Number of Positions = 12 Position x 2 Rows = 24

TITLE: Part Number Configuration for 5500 Series

Tolerance:
HUND. ±.02
THOU. ±.000
FRACT. ±.01
ANGLE ±1°

SCALE

THIS IS A CONFIDENTIAL DRAWING AND
MUST BE TREATED AS SUCH. NO
DISTRIBUTION IS ALLOWED WITHOUT
WRITTEN APPROVAL BY EB Y ELECTRO INC.



IMPORTANT DISCLAIMER: All information provided on this print is for reference. Always perform your own tests and acquire samples and further information to determine product suitability. While we make effort to provide accurate information, we cannot be responsible for errors either of omission or typographical. EB Y Electro, Inc. assumes no responsibility for the use or suitability of any product. All products and specifications are subject to change without prior written notice.

DRAWN MWP DATE 11/02/10
CHECKED DATE
APPROVED DATE

SIZE
A

DRAWING NUMBER:
5500-0002

REV.
D