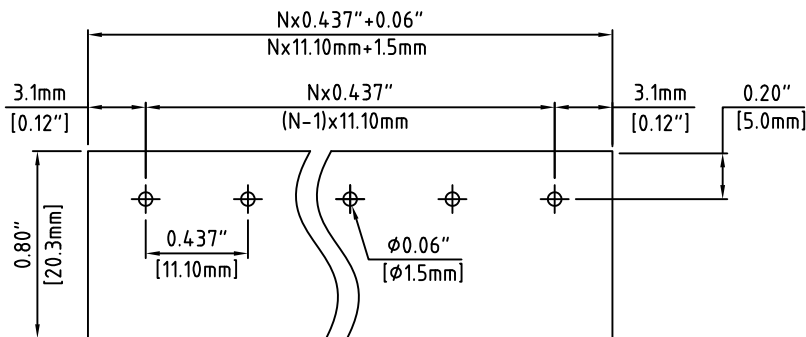
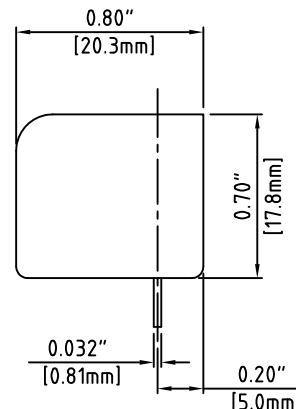


N=Number of Positions



P.C.B. Layout

Material:

Contact Solder Pin:	Brass, Tin Plated
Insulating Body:	Polycarbonate, UL94V-0, Black
Terminal Screw:	#8-32, Combo Head, Steel Zinc Plated

Electrical

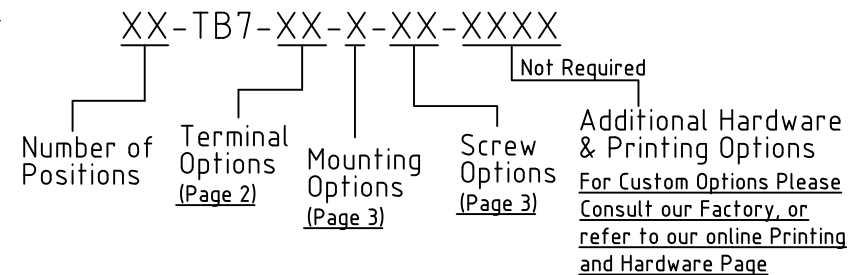
Voltage Rating:	300 VAC
Current rating:	30 AMPS
Withstand Voltage:	1500 VAC, Test time 60 seconds
Wire Range:	10-18 AWG

Mechanical

Torque:	12 Lbs-in. Max.
Operating Temperature:	-40°C to +105°C -40°F to +221°F
Soldering Temperature:	260°C, 500°F for 5 seconds max.
Safety Approval:	UL US

Part Number Configuration.

For More Details, go to next page(s)



Max Number of Positions = 26

Page 1 of 3

UNLESS OTHERWISE SPECIFIED BREAK ALL SHARP EDGES AND DEBURR ALL HOLES

TITLE:

0.437" SPACING, BARRIER BLOCK

LIMITS: UNLESS OTHERWISE SPECIFIED
HUND.±.02 FRACT.±1/64
THOU.±.005 ANGLE±1°

SCALE

THIS IS A CONFIDENTIAL DRAWING AND MUSTBE TREATED AS SUCH. NO DISTRIBUTION IS ALLOWED WITHOUT WRITTEN APPROVAL BY EBY ELECTRO INC.

EBY Electro Inc.
PLAINVIEW, NY 11803

IMPORTANT DISCLAIMER: All information provided on this print is for reference. Always perform your own tests and acquire samples and further information to determine product suitability. While we make effort to provide accurate information, we cannot be responsible for errors either of omission or typographical. EBY Electro, Inc. assumes no responsibility for the use or suitability of any product. All products and specifications are subject to change without prior written notice.

METRIC LIMITS
ONE PLACE ±0.3
TWO PLACES ±0.10
ANGLE ± 1°

DRAWN JM
CHECKED
APPROVED

DATE 10/26/10
DATE
DATE

SIZE
A

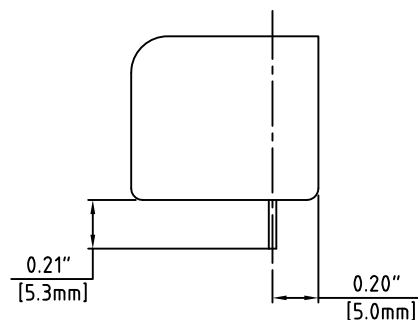
DRAWING NUMBER:

TB7-0001

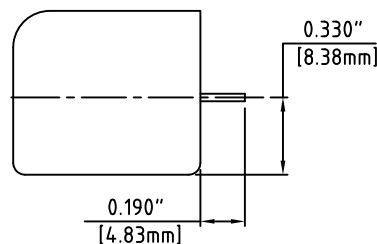
REV.

Terminal Options

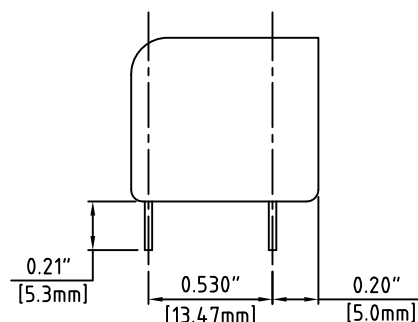
PC - PC Mount



RA - Right Angle PC Mount

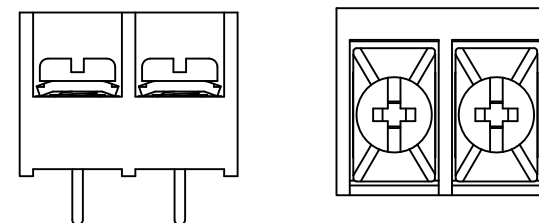


DL - Dual PC Mount

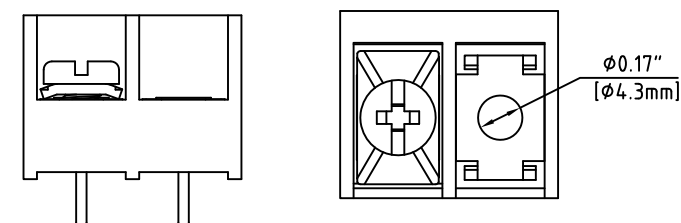


Mounting Options

N - No Mounting



W - Mounting with End Barriers



UNLESS OTHERWISE SPECIFIED BREAK ALL SHARP EDGES AND DEBURR ALL HOLES

TITLE:

Part Number Configuration for TB7 Series

LIMITS: UNLESS OTHERWISE SPECIFIED
HUND. ± 0.2 FRACT. ± 1/64
THOU. ± 0.005 ANGLE ± 1°

SCALE

THIS IS A CONFIDENTIAL DRAWING AND MUST BE TREATED AS SUCH. NO DISTRIBUTION IS ALLOWED WITHOUT WRITTEN APPROVAL BY EBY ELECTRO INC.

EBY Electro Inc.
PLAINVIEW, NY 11803

IMPORTANT DISCLAIMER: All information provided on this print is for reference. Always perform your own tests and acquire samples and further information to determine product suitability. While we make effort to provide accurate information, we cannot be responsible for errors either of omission or typographical. EBY Electro, Inc. assumes no responsibility for the use or suitability of any product. All products and specifications are subject to change without prior written notice.

METRIC LIMITS
ONE PLACE ± 0.3
TWO PLACES ± 0.10
ANGLE ± 1°

DRAWN JM
CHECKED _____
APPROVED _____


DATE 10/26/10
DATE _____
DATE _____

SIZE
A

DRAWING NUMBER:


TB7-0002

REV.

 RoHS Compliant	Rev.	Description/Eco	Date	By

Available Screw Options

- 00 - No Screws
- 01 - Steel, Zinc Plated,
- 02 - steel, Zinc plated, w/ Washer
- 03 - Brass, Nickel Plated
- 04 - Brass, Nickel Plated, w/ Washer
- 05 - Stainless Steel, Phillips Head
- 11 - Steel, Zinc Plated, Captive
- 12 - Steel, Zinc Plated, Captive, w/ Washer
- 13 - Brass, Nickel Plated, Captive
- 14 - Brass, Nickel Plated, Captive, w/ Washer
- 21 - Steel, Zinc Plated, Captive, Wire Ready
- 22 - Steel, Zinc Plated, Captive, Wire Ready, w/ Washer
- 23 - Brass, Nickel Plated, Captive, Wire Ready
- 24 - Brass, Nickel Plated, Captive, Wire Ready, w/ Washer
- 46 - Steel, Zinc Plated, Thread Interrupt, Wire Ready, w/ Washer

UNLESS OTHERWISE SPECIFIED BREAK ALL SHARP EDGES AND DEBURR ALL HOLES		TITLE: Part Number Configuration for TB7 Series			
LIMITS: UNLESS OTHERWISE SPECIFIED HUND.±.02 FRACT.±1/64 THOU.±.005 ANGLE±1°		SCALE	THIS IS A CONFIDENTIAL DRAWING AND MUSTBE TREATED AS SUCH. NO DISTRIBUTION IS ALLOWED WITHOUT WRITTEN APPROVAL BY EBY ELECTRO INC.		 PLAINVIEW, NY 11803
DRAWN <u> JM </u> DATE <u>10/26/10</u>		SIZE	DRAWING NUMBER: <u>TB7-0003</u>		REV.
CHECKED <u> </u> DATE <u> </u>		<u>A</u>			
APPROVED <u> </u> DATE <u> </u>					

IMPORTANT DISCLAIMER: All information provided on this print is for reference. Always perform your own tests and acquire samples and further information to determine product suitability. While we make effort to provide accurate information, we cannot be responsible for errors either of omission or typographical. EBY Electro, Inc. assumes no responsibility for the use or suitability of any product. All products and specifications are subject to change without prior written notice.

METRIC LIMITS
ONE PLACE ±0.3
TWO PLACES ±0.10
ANGLE ± 1°