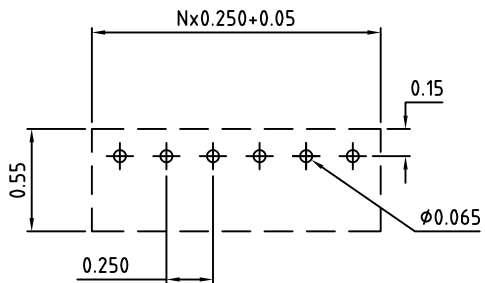
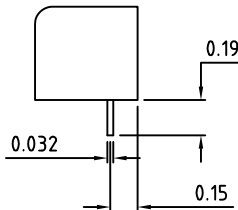


N=Number of Positions



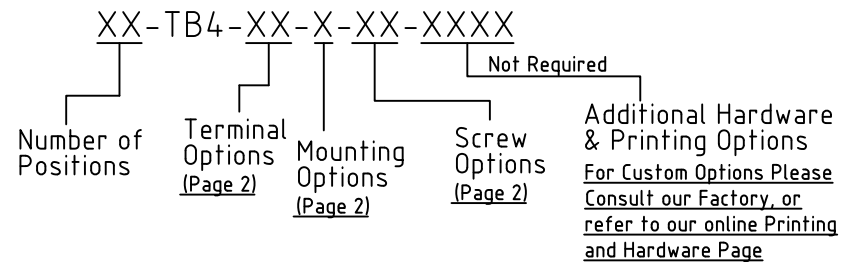
PCB Layout



Material:	
Contact Solder Pin:	Brass, Tin Plated
Insulating Body:	Polyamide, UL94V-0, Black
Terminal Screw:	#3-48, Combo Head
Electrical	
Voltage Rating:	300 VAC
Current rating:	10 AMPS
Wire Range:	18-22 AWG
Withstand Voltage:	1500 VAC, Test time 60 seconds
Mechanical	
Torque:	6.0 lbs-in
Operating Temperature:	-40°C to +130°C -40°F to +266°F
Soldering Temperature:	260°C, 500°F for 5 seconds max.
Safety Approval:	CSA US

Part Number Configuration.

For More Details, go to next page(s)



All dimensions in inches
Max Number of Positions = 30

UNLESS OTHERWISE SPECIFIED BREAK ALL SHARP EDGES AND DEBURR ALL HOLES	TITLE: 0.250" SPACING, TRI-BARRIER BLOCK
---	--

LIMITS: UNLESS OTHERWISE SPECIFIED HUND.±.02 FRACT.±1/64 THOU.±.005 ANGLE±1°	SCALE	THIS IS A CONFIDENTIAL DRAWING AND MUSTBE TREATED AS SUCH. NO DISTRIBUTION IS ALLOWED WITHOUT WRITTEN APPROVAL BY EBYP ELECTRO INC.	EBY Electro Inc. PLAINVIEW, NY 11803
--	-------	---	--

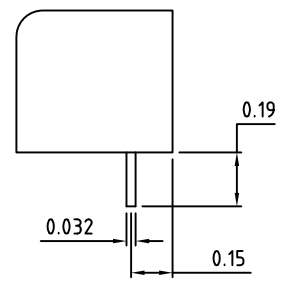
IMPORTANT DISCLAIMER: All information provided on this print is for reference. Always perform your own tests and acquire samples and further information to determine product suitability. While we make effort to provide accurate information, we cannot be responsible for errors either of omission or typographical. EBYP Electro, Inc. assumes no responsibility for the use or suitability of any product. All products and specifications are subject to change without prior written notice.

METRIC LIMITS ONE PLACE ±0.3 TWO PLACES ±0.10 ANGLE ±1°	DRAWN JM CHECKED _____ APPROVED _____	DATE 11/02/10 DATE _____ DATE _____	SIZE A	DRAWING NUMBER: TB4-0001	REV. C
--	---	---	------------------	------------------------------------	------------------

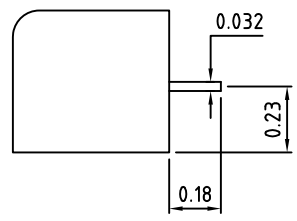
RoHS Compliant	Rev.	ECO#	Date	By
	C	1123-0516	05/25/16	AJT

Terminal Options

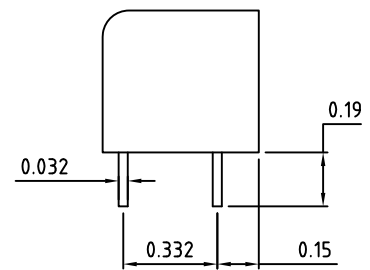
PC - PC Mount



RA - Right Angle PC Mount

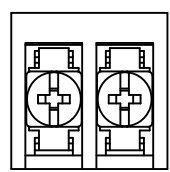


DL - Dual PC Mounts

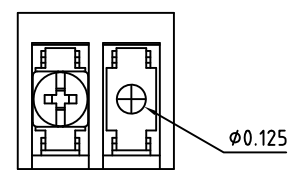


Mounting Options

N - No Mounting



W - Mountable with End Barrier



Available Screw Options

- 00 - No Screws
- 02 - Steel, Zinc Plated w/ Washer
- 04 - Brass, Nickel Plated w/ Washer
- 46 - Steel, Zinc Plated, Thread Interrupt w/ Washer, Wire Ready

UNLESS OTHERWISE SPECIFIED BREAK ALL SHARP EDGES AND DEBURR ALL HOLES

TITLE: Part Number Configuration for TB4 Series

LIMITS: UNLESS OTHERWISE SPECIFIED
 HUND. ± 0.02 FRACT. ± 1/64
 THOU. ± 0.005 ANGLE ± 1°

SCALE: THIS IS A CONFIDENTIAL DRAWING AND MUST BE TREATED AS SUCH. NO DISTRIBUTION IS ALLOWED WITHOUT WRITTEN APPROVAL BY EBY ELECTRO INC.

EBY Electro Inc.
 PLAINVIEW, NY 11803

IMPORTANT DISCLAIMER: All information provided on this print is for reference. Always perform your own tests and acquire samples and further information to determine product suitability. While we make effort to provide accurate information, we cannot be responsible for errors either of omission or typographical. EBY Electro, Inc. assumes no responsibility for the use or suitability of any product. All products and specifications are subject to change without prior written notice.	METRIC LIMITS	DRAWN	DATE	SIZE	DRAWING NUMBER:	REV.
	ONE PLACE ± 0.3	JM	11/02/10	A	TB4-0002	C
	TWO PLACES ± 0.10	CHECKED	DATE			
	ANGLE ± 1°	APPROVED	DATE			