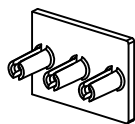
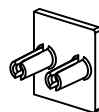


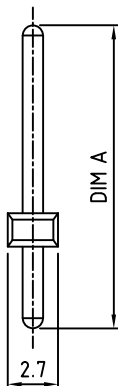
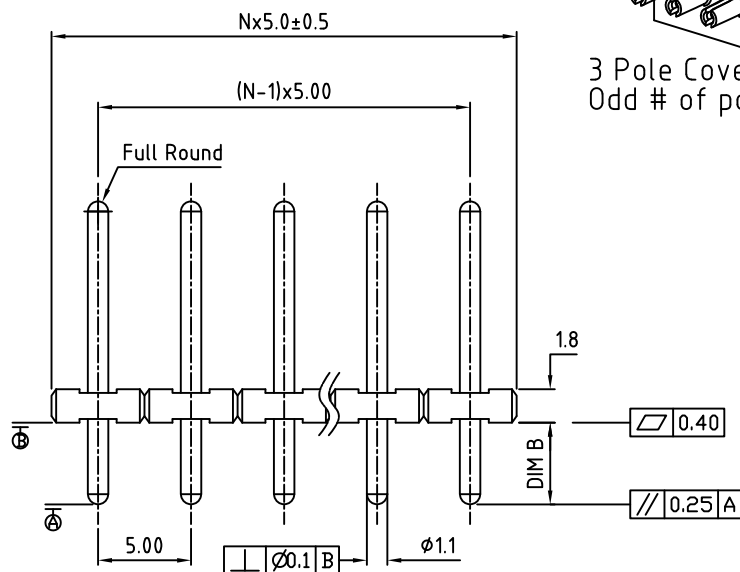
Pickup Covers (Optional)



3 Pole Cover for Odd # of poles



2 Pole Cover for Even # of poles



Material:	
Contact Solder Pin:	Brass (CuZn), Tin Plated (80-120µ" + Sn 120-200µ")
Insulating Body:	Polyamide, UL94V-0, Black
Pickup Cover:	Polyamide, PA46
Electrical	
Voltage Rating:	300 VAC
Current rating:	10 AMPS
Withstand Voltage:	1600 VAC, Test time 60 seconds
Mechanical	
Operating Temperature:	-40°C to +105°C -40°F to +221°F
Soldering Temperature:	260°C, 500°F for 5 seconds max.
Safety Approval:	UL US

Part Number Configuration.

PS6XX-XX-XXX

Length Option

- 56-Dim A = 15.3mm
Dim B = 1.6mm
- 02-Dim A = 11.5mm
- 12-Dim A = 7.8mm
- 22-Dim A = 12.5mm
- 32-Dim A = 14.0mm
- 42-Dim A = 9.7mm
- 52-Dim A = 20.9mm
- 62-Dim A = 16.3mm
- 72-Dim A = 13.5mm
- 82-Dim A = 10.3mm
Dim B = 2.5mm
- 51-Dim A = 15.3mm
- 61-Dim A = 16.3mm
- 71-Dim A = 17.3mm
- 81-Dim A = 19.5mm
Dim B = 3.4mm
- 10-Dim A = 12.5mm
- 40-Dim A = 14.0mm
- 50-Dim A = 16.3mm
Dim B = 4.4mm

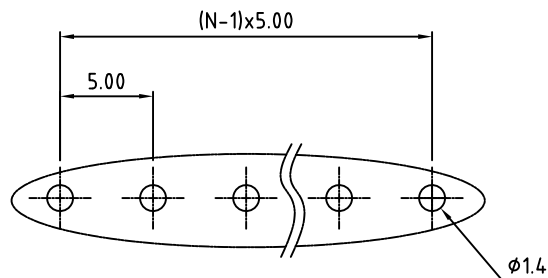
Number of Positions

- Pitch Option
0-5.00mm
2-10.00mm

Packaging Option
0-Bulk
1-Tape & Reel

- Plastic Option
0-Standard Plastic
1-High Temp Plastic

N=Number of Positions



P.C.B. Layout

Max Number of Positions = 24

UNLESS OTHERWISE SPECIFIED BREAK ALL SHARP EDGES AND DEBURR ALL HOLES	TITLE: 5.00mm SPACING, PIN STRIP
LIMITS: UNLESS OTHERWISE SPECIFIED HUND. ±.02 FRACT. ±1/64 THOU. ±.005 ANGLE ±1°	SCALE: THIS IS A CONFIDENTIAL DRAWING AND MUST BE TREATED AS SUCH. NO DISTRIBUTION IS ALLOWED WITHOUT WRITTEN APPROVAL BY EBYS ELECTRO INC.
METRIC LIMITS ONE PLACE ±0.3 TWO PLACES ±0.10 ANGLE ±1°	DRAWING NUMBER: PS6XX-XX-XXX



IMPORTANT DISCLAIMER: All information provided on this print is for reference. Always perform your own tests and acquire samples and further information to determine product suitability. While we make effort to provide accurate information, we cannot be responsible for errors either of omission or typographical. EBYS Electro, Inc. assumes no responsibility for the use or suitability of any product. All products and specifications are subject to change without prior written notice.

DRAWN MWP	DATE 02/20/08	SIZE A	REV. 0
CHECKED _____	DATE _____		
APPROVED _____	DATE _____		