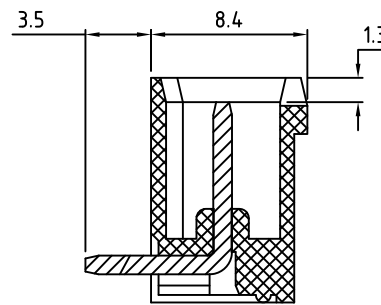
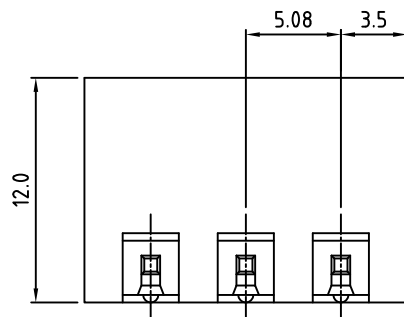
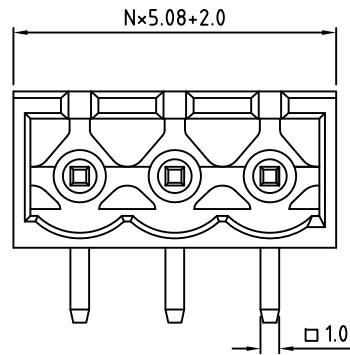
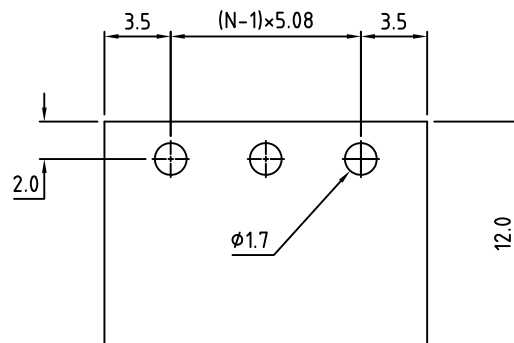
 RoHS Compliant



Rev.	ECO#	Date	By
D	0997-0115	01/27/15	MWP



N=Number of contacts



PCB Layout

Material:	
Contact Solder Pin:	Copper, Tin Plated
Insulating Body:	Polyamide, UL94V-0
Electrical	
Voltage Rating:	300 VAC / 300 VAC
Current rating:	20 AMPS / 20 AMPS
Withstand Voltage:	1500 VAC / 2500 VAC, Test time 60 seconds
Mechanical	
Operating Temperature:	-40°C to +115°C -40°F to +239°F
Soldering Temperature:	260°C, 500°F for 5 seconds max.
Safety Approval:	 / 

Part Number Configuration.

HC1508-XX-X00

Number of  
Positions

Color Code  
0-Black  
5-Green  
6-Blue

UNLESS OTHERWISE  
SPECIFIED BREAK ALL  
SHARP EDGES AND  
DEBURR ALL HOLES

TITLE: 5.08mm SPACING, PLUGGABLE  
CLOSED HORIZONTAL HEADER

LIMITS: UNLESS  
OTHERWISE SPECIFIED  
HUND.±.02 FRACT.±1/64  
THOU.±.005 ANGLE±1°

SCALE THIS IS A CONFIDENTIAL DRAWING AND  
MUSTBE TREATED AS SUCH. NO  
DISTRIBUTION IS ALLOWED WITHOUT  
WRITTEN APPROVAL BY EBY ELECTRO INC.

 EBY Electro Inc.  
PLAINVIEW, NY 11803

IMPORTANT DISCLAIMER: All information provided on this print is for reference. Always perform your own tests and acquire samples and further information to determine product suitability. While we make effort to provide accurate information, we cannot be responsible for errors either of omission or typographical. EBY Electro, Inc. assumes no responsibility for the use or suitability of any product. All products and specifications are subject to change without prior written notice.

METRIC LIMITS  
ONE PLACE ±0.3  
TWO PLACES ±0.10  
ANGLE ±1°

DRAWN JM  
CHECKED \_\_\_\_\_  
APPROVED \_\_\_\_\_

DATE 10/18/07  
DATE \_\_\_\_\_  
DATE \_\_\_\_\_

SIZE  
A

DRAWING NUMBER:  
HC1508-XX-X00

REV.  
D