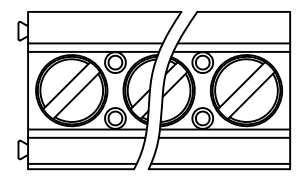
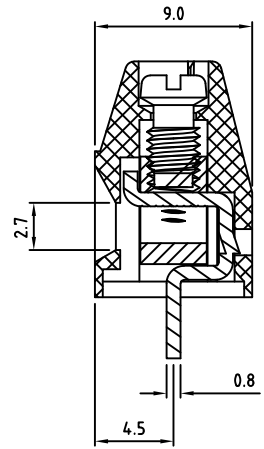
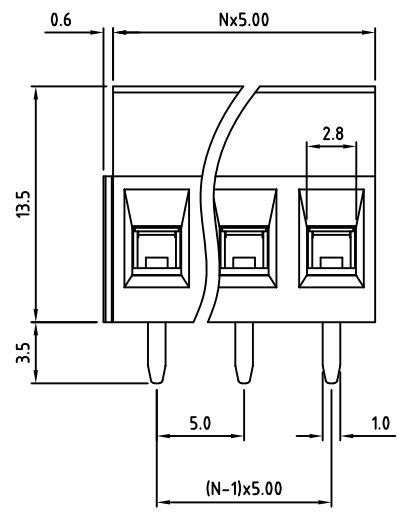


RoHS Compliant

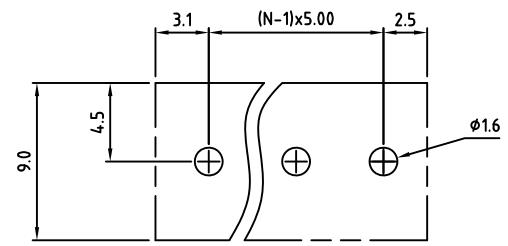
Rev.	ECO#	Date	By
B	1584-0724	07/26/24	MWP



Material:	
Contact Block:	Brass, Ni Plated
Contact Solder Pin:	Brass, Tin Plated
Screw:	M3, Steel, Zinc Plated, "-" slotted
Insulating Body:	Polyamide, UL94V-0
Electrical	
Voltage Rating:	300 VAC
Current rating:	16 AMPS
Withstand Voltage:	1500 VAC, Test time 60 sec
Wire Range:	12-28 AWG
Mechanical	
Recommended Torque:	3.5 lbs-in. Min - 6.2 lb-in Max
Operating Temperature:	-40°C to +115°C -40°F to +240°F
Soldering Temperature:	260°C, 500°F for 5 seconds
Safety Approval:	CE US



N=Number of Positions



Part Number Configuration.

EB792-XX-X00

Number of Positions: 0-Black, 5-Green

Max Number of Positions = 24 All Dimensions in Millimeters

TITLE: 5.0mm, CAGE CLAMP

METRIC LIMITS ONE PLACE $\pm 0.3$ TWO PLACES $\pm 0.10$ ANGLE $\pm 1^\circ$	SCALE	THIS IS A CONFIDENTIAL DRAWING AND MUST BE TREATED AS SUCH. NO DISTRIBUTION IS ALLOWED WITHOUT WRITTEN APPROVAL BY EB ELECTRO INC.	<b>Amphenol</b> <b>EBY</b> Electro Inc. PLAINVIEW, NY 11803
DRAWN JM	DATE 10/21/08	SIZE A	DRAWING NUMBER: EB792-XX-X00
CHECKED	DATE		REV. B

IMPORTANT DISCLAIMER: All information provided on this print is for reference. Always perform your own tests and acquire samples and further information to determine product suitability. While we make effort to provide accurate information, we cannot be responsible for errors either of omission or typographical. EBY Electro, Inc. assumes no responsibility for the use or suitability of any product. All products and specifications are subject to change without prior written notice.