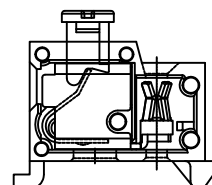
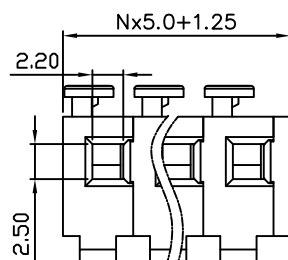
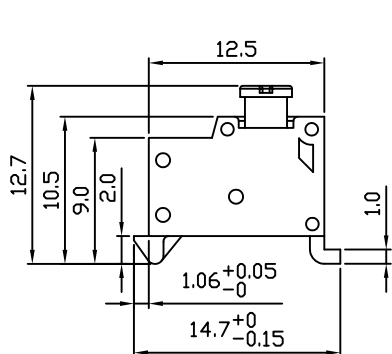
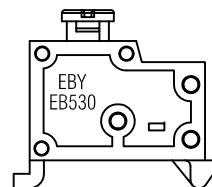
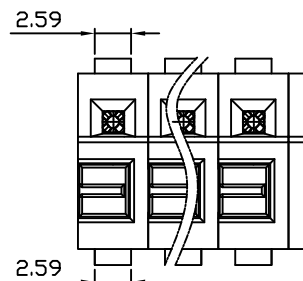


Material:	
Contact Solder Pin:	PhPz, Tin Plated
Wire Retention Spring:	Stainless Steel
Insulating Body:	Polyamide PA66, UL94V-0
Electrical	
Voltage Rating:	300 VAC
Current rating:	7 AMPS
Wire Range:	16-24 AWG
Mechanical	
Operating Temperature:	-40°C to +115°C -40°F to +239°F

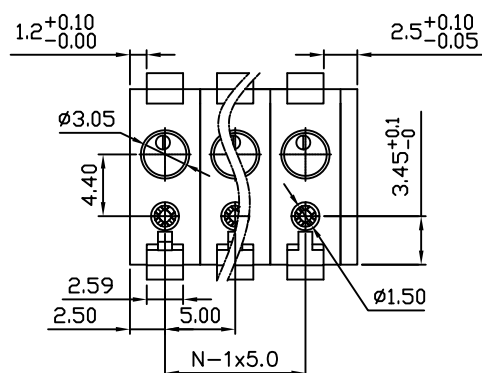


Note: Mates with Ø1.10mm pin

Part Number Configuration.

EB530-XX-X00

Number of Positions: 0-BLACK, 5-Green, 6-BLUE



MAX NUMBER OF POSITIONS = 24

UNLESS OTHERWISE SPECIFIED BREAK ALL SHARP EDGES AND DEBURR ALL HOLES
 TITLE: 5.00mm SPACING, MODULAR, PLUGGABLE

LIMITS: UNLESS OTHERWISE SPECIFIED
 HUND. ±0.2 FRACT. ±1/64 THOU. ±0.05 ANGLE ±1°
 SCALE: THIS IS A CONFIDENTIAL DRAWING AND MUST BE TREATED AS SUCH. NO DISTRIBUTION IS ALLOWED WITHOUT WRITTEN APPROVAL BY EB530 ELECTRO INC.
EBY Electro Inc. PLAINVIEW, NY 11803

IMPORTANT DISCLAIMER: All information provided on this print is for reference. Always perform your own tests and acquire samples and further information to determine product suitability. While we make effort to provide accurate information, we cannot be responsible for errors either of omission or typographical. EB530 Electro, Inc. assumes no responsibility for the use or suitability of any product. All products and specifications are subject to change without prior written notice.

METRIC LIMITS ONE PLACE ±0.3 TWO PLACES ±0.10 ANGLE ±1°
 DRAWN: MWP DATE: 01/08/13
 CHECKED: DATE:
 APPROVED: DATE:
 SIZE: A DRAWING NUMBER: EB530-XX-X00
 REV.