

Material:	
Contact:	Copper, Tin over Ni Plating
Wire Retention Spring:	Stainless Steel
Lever:	Thermoplastic, UL94V-0, White, RAL9003
Insulating Body:	Thermoplastic, UL94V-0
Electrical	
Voltage Rating:	600 VAC
Current rating:	30 AMPS
Withstand Voltage:	2200 VAC, Test time 60 sec
Wire Range:	10-24 AWG
Mechanical	
Wire Strip Length:	12-13mm
Operating Temperature:	-40°C to +115°C -40°F to +239°F
Soldering Temperature:	260°C, 500°F for 5 seconds
Safety Approval:	CSA US

(▲) = Critical Dimensions

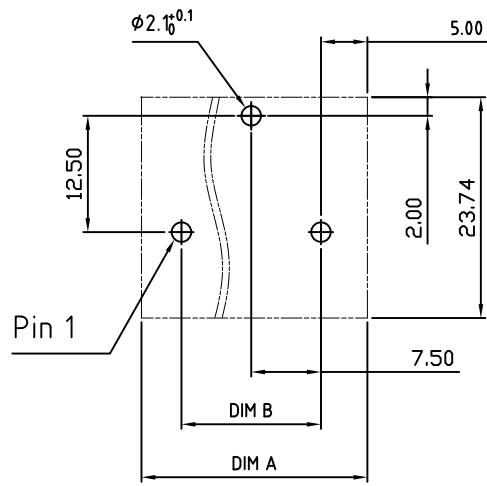
Part Number Configuration.

EB4210-XX-X02

Number of Positions

Body Color

- 0 Black (RAL9005)
- 2 Red (RAL3001/D)
- 3 Orange (RAL2011/P)
- 4 Yellow (RAL1018/A)
- 5 Green (RAL6018/T)
- 6 Blue (RAL5015/A)
- 8 Grey (RAL7004/P)
- 9 White (RAL1102)



Recommended PCB Layout

N=NUMBER OF POSITIONS

DIM		TOL				
		1P	2P	3P--4P	5P--8P	9P--12P
Dim A	N×7.5+1.8	±0.20	±0.40	±0.40	±0.50	±0.60
Dim B	(N-1)×7.5	/	±0.20	±0.40	±0.50	±0.60

UNLESS OTHERWISE SPECIFIED BREAK ALL SHARP EDGES AND DEBURR ALL HOLES

TITLE: 7.5mm Spacing, Modular

LIMITS: UNLESS OTHERWISE SPECIFIED
 HUND. ±0.2 FRACT. ±1/64
 THOU. ±0.05 ANGLE ±1°

SCALE: THIS IS A CONFIDENTIAL DRAWING AND MUST BE TREATED AS SUCH. NO DISTRIBUTION IS ALLOWED WITHOUT WRITTEN APPROVAL BY EB4 ELECTRO INC.



IMPORTANT DISCLAIMER: All information provided on this print is for reference. Always perform your own tests and acquire samples and further information to determine product suitability. While we make effort to provide accurate information, we cannot be responsible for errors either of omission or typographical. EB4 Electro, Inc. assumes no responsibility for the use or suitability of any product. All products and specifications are subject to change without prior written notice.

METRIC LIMITS ONE PLACE ±0.3 TWO PLACES ±0.10 ANGLE ±1°	DRAWN _____ MWP _____ DATE 08/28/23	SIZE A	DRAWING NUMBER: EB4210-XX-X02	REV. _____
	CHECKED _____ DATE _____			
	APPROVED _____ DATE _____			