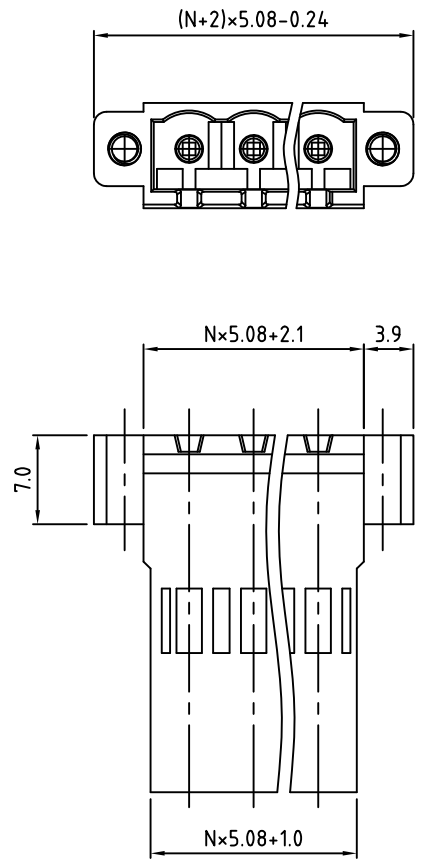
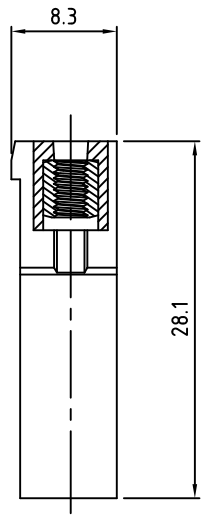


RoHS Compliant

Rev.	ECO#	Date	By
A	1156-1116	11/21/16	AJT



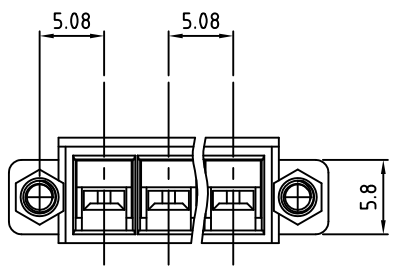
N=Number of Positions



Material:	Polyamide, UL94V-0, Green
Voltage Rating:	300 VAC
Current rating:	10 AMPS
Mounting Nut:	M2.5, Brass
Withstand Voltage:	1500 VAC, Test time 60 seconds

Note:
- This block is a housing for a Crimpable Pin Insert, C1219-XX.

Part Number Configuration.
CH1580MN-XX-500
Number of Positions: XX
Color: 5-Green



UNLESS OTHERWISE SPECIFIED BREAK ALL SHARP EDGES AND DEBURR ALL HOLES	TITLE: 5.08mm SPACING, PLUGGABLE HOUSING MOUNTING NUT		 PLAINVIEW, NY 11803
	LIMITS: UNLESS OTHERWISE SPECIFIED HUND. ± 0.2 THOU. ± 0.05	SCALE: THIS IS A CONFIDENTIAL DRAWING AND MUST BE TREATED AS SUCH. NO DISTRIBUTION IS ALLOWED WITHOUT WRITTEN APPROVAL BY EBY ELECTRO INC.	