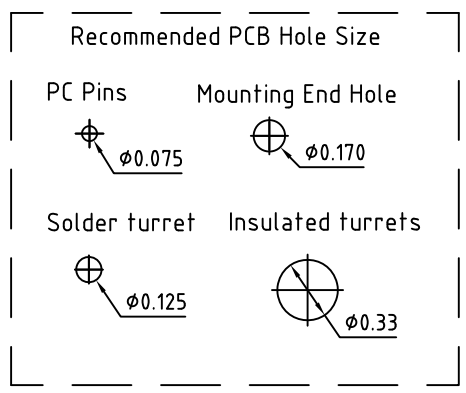
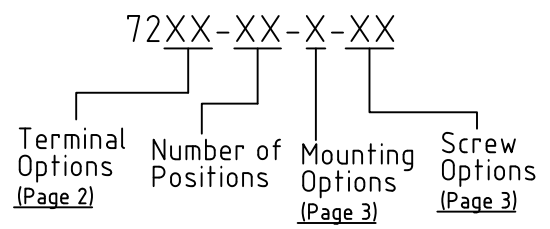


Material:	
Contact Solder Pin:	Brass, Tin Plated
Insulating Body:	Polycarbonate, UL94V-0, Black
Terminal Screw:	#6-32, Screw options on page 3
Electrical	
Voltage Rating:	600 VAC
Current rating:	30 AMPS
Wire Range:	10-22 AWG
Withstand Voltage:	3500 VAC, Test time 60 seconds
Mechanical	
Torque Rating:	10.0 lbs-in Max.
Operating Temperature:	-40°C to +105°C -40°F to +221°F
Soldering Temperature:	260°C, 500°F for 5 seconds max.
Safety Approval:	UL US

Part Number Configuration.



Max Number of Positions = 24

UNLESS OTHERWISE SPECIFIED BREAK ALL SHARP EDGES AND DEBURR ALL HOLES

TITLE: 0.437" SPACING, BARRIER BLOCK

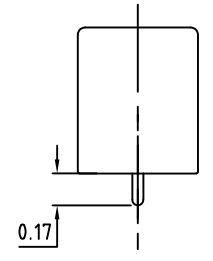
LIMITS: UNLESS OTHERWISE SPECIFIED HUND. ±.02 FRACT. ±1/64 THOU. ±.005 ANGLE ±1°	SCALE	THIS IS A CONFIDENTIAL DRAWING AND MUSTBE TREATED AS SUCH. NO DISTRIBUTION IS ALLOWED WITHOUT WRITTEN APPROVAL BY EBY ELECTRO INC.	<b>EBY</b> Electro Inc. PLAINVIEW, NY 11803
--	-------	--	--

IMPORTANT DISCLAIMER: All information provided on this print is for reference. Always perform your own tests and acquire samples and further information to determine product suitability. While we make effort to provide accurate information, we cannot be responsible for errors either of omission or typographical. EB Y Electro, Inc. assumes no responsibility for the use or suitability of any product. All products and specifications are subject to change without prior written notice.

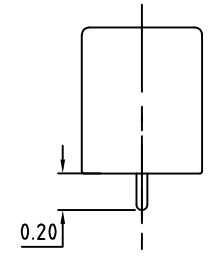
METRIC LIMITS ONE PLACE ±0.3 TWO PLACES ±0.10 ANGLE ± 1°	DRAWN AJT CHECKED APPROVED	DATE 10/02/14 DATE DATE	SIZE A	DRAWING NUMBER: 7200-0001	REV. F
---	----------------------------------	-------------------------------	-----------	------------------------------	-----------

# Terminal Options

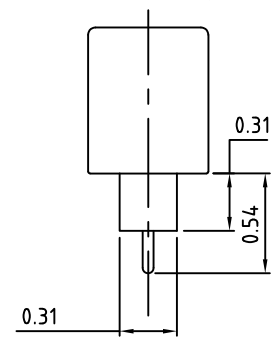
03 - Short PC



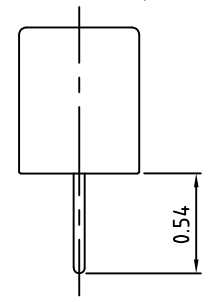
04 - PC



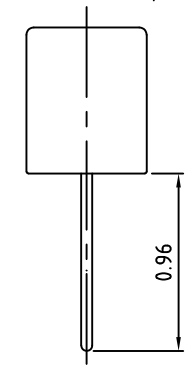
10 - Insulated PC Wire Wrap



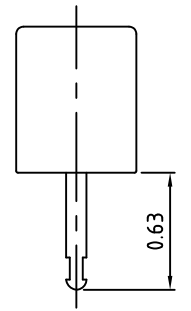
11 - Wire Wrap



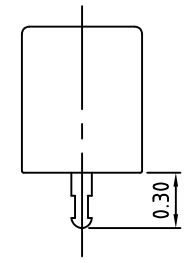
12 - Extended Wire Wrap



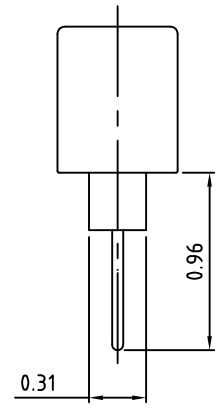
15 - Solder Turret



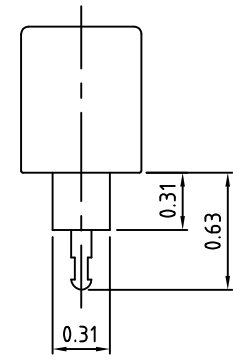
17 - Short Solder Turret



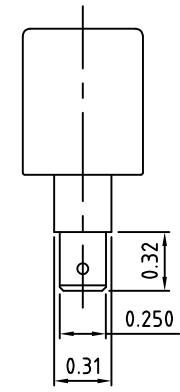
22 - Extended Wire Wrap



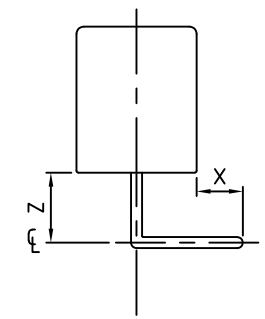
23 - Insulated Solder Turret



40 - 0.250 Quick Connect



33 - Right Angle



Code	"X" Min	"Z" ±0.04"	EBY Electro offers a wide selection of standard and custom right angle bends for single row PCB mounted terminal blocks. If the exact bend you require is not shown, contact us. Our unique right Angle Manufacturing Process allows any type of bend for the same price as a standard bend. We will give you exactly what you need.
RA05	0.17"	0.075"	
RA12	0.20"	0.38"	

UNLESS OTHERWISE SPECIFIED BREAK ALL SHARP EDGES AND DEBURR ALL HOLES

TITLE: Mounting Options and Terminal Styles

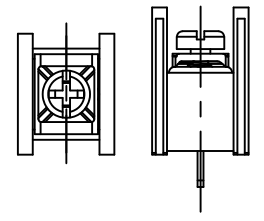
LIMITS: UNLESS OTHERWISE SPECIFIED  
HUND.±.02 FRACT.±1/64 THOU.±.005 ANGLE±1°

SCALE THIS IS A CONFIDENTIAL DRAWING AND MUSTBE TREATED AS SUCH. NO DISTRIBUTION IS ALLOWED WITHOUT WRITTEN APPROVAL BY EBYP ELECTRO INC.

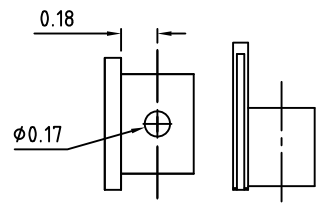
**EBY** Electro Inc.  
PLAINVIEW, NY 11803

Mounting Options

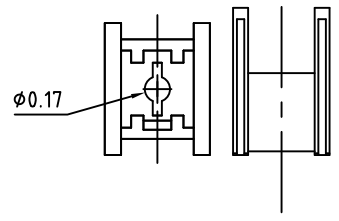
N - No Mounting Ends



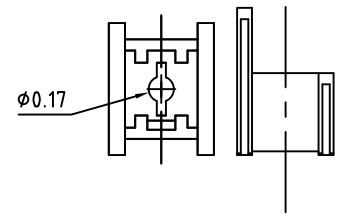
C -  $\phi 0.17$  Solid Plastic Without End Barriers



H -  $\phi 0.17$  No Plate With End Barriers



K -  $\phi 0.17$  No Plate Without End Barriers



Available Screw Options

Note: All options use #6-32 screw

- 00 - No Screws
- 01 - Steel, Zinc Plated,
- 02 - steel, Zinc plated, w/ Washer
- 03 - Brass, Nickel Plated
- 04 - Brass, Nickel Plated, w/ Washer
- 05 - Stainless Steel, Phillips Head
- 11 - Steel, Zinc Plated, Captive
- 12 - Steel, Zinc Plated, Captive, w/ Washer
- 13 - Brass, Nickel Plated, Captive
- 14 - Brass, Nickel Plated, Captive, w/ Washer
- 21 - Steel, Zinc Plated, Captive, Wire Ready
- 22 - Steel, Zinc Plated, Captive, Wire Ready, w/ Washer
- 23 - Brass, Nickel Plated, Captive, Wire Ready
- 24 - Brass, Nickel Plated, Captive, Wire Ready, w/ Washer
- 46 - Steel, Zinc Plated, Thread Interrupt, Wire Ready, w/ Washer

UNLESS OTHERWISE SPECIFIED BREAK ALL SHARP EDGES AND DEBURR ALL HOLES	TITLE: <b>Screw Options</b>
---	--------------------------------

LIMITS: UNLESS OTHERWISE SPECIFIED HUND. $\pm 0.2$ FRACT. $\pm 1/64$ THOU. $\pm 0.05$ ANGLE $\pm 1^\circ$	SCALE	THIS IS A CONFIDENTIAL DRAWING AND MUSTBE TREATED AS SUCH. NO DISTRIBUTION IS ALLOWED WITHOUT WRITTEN APPROVAL BY EBYS ELECTRO INC.	<b>EBY</b> Electro Inc. PLAINVIEW, NY 11803
---	-------	---	--

IMPORTANT DISCLAIMER: All information provided on this print is for reference. Always perform your own tests and acquire samples and further information to determine product suitability. While we make effort to provide accurate information, we cannot be responsible for errors either of omission or typographical. EBY Electro, Inc. assumes no responsibility for the use or suitability of any product. All products and specifications are subject to change without prior written notice.

METRIC LIMITS ONE PLACE $\pm 0.3$ TWO PLACES $\pm 0.10$ ANGLE $\pm 1^\circ$	DRAWN <u>  AJT  </u> DATE <u>  10/02/14  </u>	SIZE <b>A</b>	DRAWING NUMBER: <b>7200-0003</b>	REV. <b>F</b>
	CHECKED _____ DATE _____			
	APPROVED _____ DATE _____			