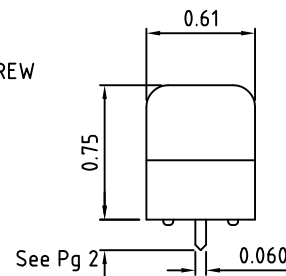
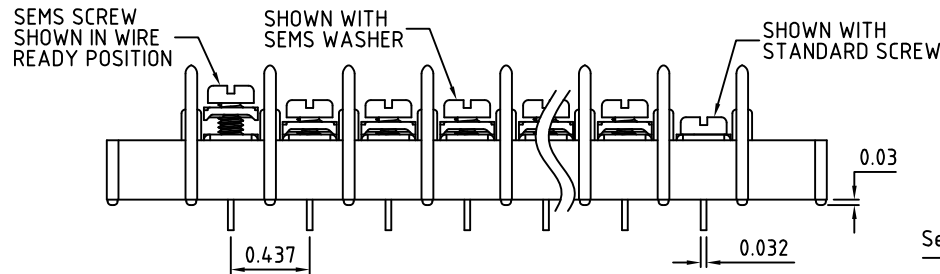
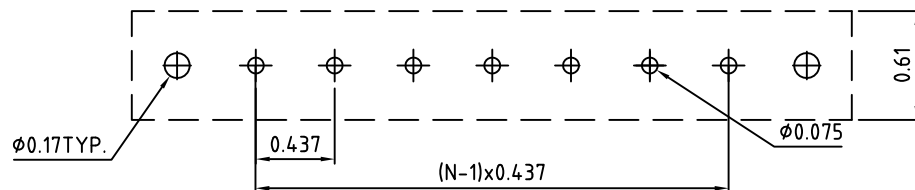


PRODUCT END of LIFE.
 Limited Availability.
 Please contact factory for more information.

Material:	
Contact Solder Pin:	Brass, Tin Plated
Insulating Body:	Polycarbonate, UL94 V-0, Black
Terminal Screw:	See page 3
Electrical	
Voltage Rating:	600 VAC
Current rating:	20 AMPS
Wire Range:	12-24 AWG
Mechanical	
Torque:	10.0 lbs-in. Max.
Operating Temperature:	-40°C to +105°C -40°F to +221°F
Soldering Temperature:	260°C, 500°F for 5 seconds max.
Safety Approval:	UL US

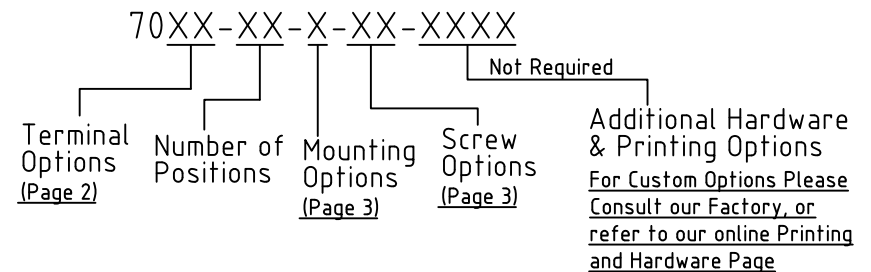


(Shown With Optional Mounting Ends)
 (For Mounting Options See Page 3)



PCB Layout

Part Number Configuration.



Max Number of Positions = 24

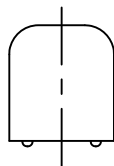
Page 1 of 3

UNLESS OTHERWISE SPECIFIED BREAK ALL SHARP EDGES AND DEBURR ALL HOLES	TITLE: 0.437" SPACING, BARRIER BLOCK
LIMITS: UNLESS OTHERWISE SPECIFIED HUND. ± 0.02 FRACT. $\pm 1/64$ THOU. ± 0.005 ANGLE $\pm 1^\circ$	SCALE THIS IS A CONFIDENTIAL DRAWING AND MUST BE TREATED AS SUCH. NO DISTRIBUTION IS ALLOWED WITHOUT WRITTEN APPROVAL BY EBY ELECTRO INC.
<p>PLAINVIEW, NY 11803</p>	

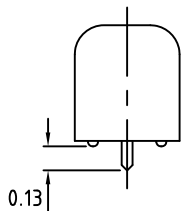
IMPORTANT DISCLAIMER: All information provided on this print is for reference. Always perform your own tests and acquire samples and further information to determine product suitability. While we make effort to provide accurate information, we cannot be responsible for errors either of omission or typographical. EBY Electro, Inc. assumes no responsibility for the use or suitability of any product. All products and specifications are subject to change without prior written notice.

METRIC LIMITS ONE PLACE ± 0.3 TWO PLACES ± 0.10 ANGLE $\pm 1^\circ$	DRAWN <u>MWP</u> CHECKED <u> </u> APPROVED <u> </u>	DATE <u>06/19/2012</u> DATE <u> </u> DATE <u> </u>	SIZE A	DRAWING NUMBER: 7000-0001	REV.
--	---	--	------------------	-------------------------------------	------

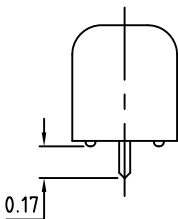
01 - Chassis Mount



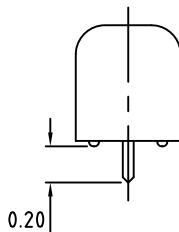
02 - Zero Trim PC



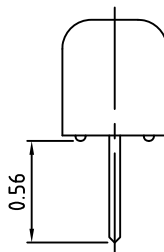
03 - Short PC



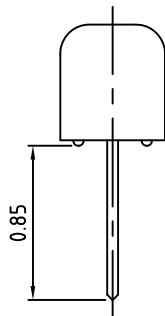
04 - PC



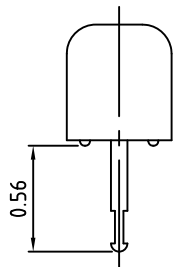
11 - Wire Wrap



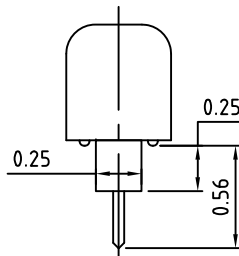
12 - Extended Wire Wrap



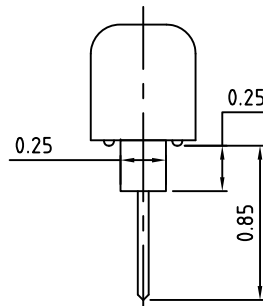
15 - Solder Turret



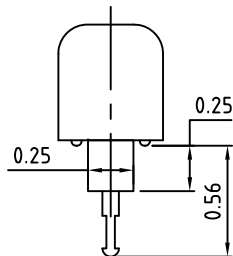
21 - Insulated PC



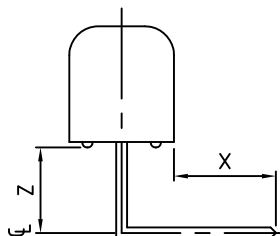
22 - Extended Insulated PC



23 - Insulated Solder Turret



33 - Right Angle

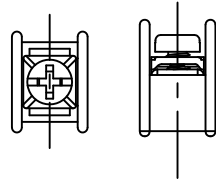


Code	"X" Min	"Z" ±0.04"	EBY Electro offers a wide selection of standard and custom right angle bends for single row PCB mounted terminal blocks. If the exact bend you require is not shown, contact us. Our unique right Angle Manufacturing Process allows any type of bend for the same price as a standard bend. we will give you exactly what you need, the first time and every time.
RA02	0.10"	0.17"	
RA04	0.15"	0.12"	
RA08	0.10"	0.48"	
RA10	0.15"	0.43"	
RA12	0.20"	0.38"	

Terminal Options

Mounting Options

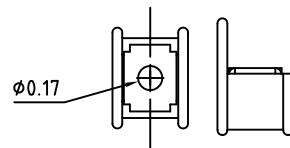
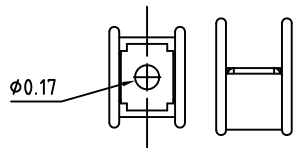
N - No Mounting Ends



Available Screw Options

W - $\phi 0.17$ Mounting Plate With End Barriers

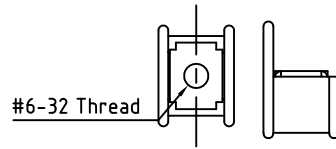
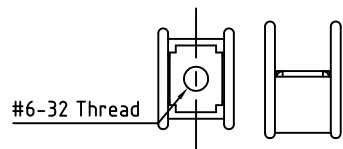
C - $\phi 0.17$ Mounting Plate Without End Barriers



- 00 - No Screws
- 01 - Steel, Zinc Plated,
- 02 - steel, Zinc plated, w/ Washer
- 03 - Brass, Nickel Plated
- 04 - Brass, Nickel Plated, w/ Washer
- 05 - Stainless Steel, Phillips Head
- 09 - Stainless Steel, w/ Washer
- 11 - Steel, Zinc Plated, Captive
- 12 - Steel, Zinc Plated, Captive, w/ Washer
- 13 - Brass, Nickel Plated, Captive
- 14 - Brass, Nickel Plated, Captive, w/ Washer
- 21 - Steel, Zinc Plated, Captive, Wire Ready
- 22 - Steel, Zinc Plated, Captive, Wire Ready, w/ Washer
- 23 - Brass, Nickel Plated, Captive, Wire Ready
- 24 - Brass, Nickel Plated, Captive, Wire Ready, w/ Washer
- 46 - Steel, Zinc Plated, Thread Interrupt, Wire Ready, w/ Washer

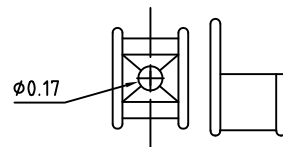
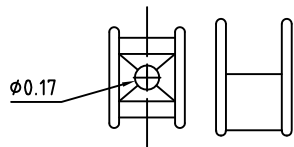
M - #6-32 Thread Plate With End Barriers

T - #6-32 Thread Plate Without End Barriers



H - $\phi 0.17$ No Plate With End Barriers

K - $\phi 0.17$ No Plate Without End Barriers



UNLESS OTHERWISE SPECIFIED BREAK ALL SHARP EDGES AND DEBURR ALL HOLES

TITLE:

Mounting and Screw Options

LIMITS: UNLESS OTHERWISE SPECIFIED
HUND. ± 0.2 FRACT. $\pm 1/64$
THOU. ± 0.005 ANGLE $\pm 1^\circ$

SCALE

THIS IS A CONFIDENTIAL DRAWING AND MUST BE TREATED AS SUCH. NO DISTRIBUTION IS ALLOWED WITHOUT WRITTEN APPROVAL BY EBY ELECTRO INC.

EBY Electro Inc.
PLAINVIEW, NY 11803

IMPORTANT DISCLAIMER: All information provided on this print is for reference. Always perform your own tests and acquire samples and further information to determine product suitability. While we make effort to provide accurate information, we cannot be responsible for errors either of omission or typographical. EBY Electro, Inc. assumes no responsibility for the use or suitability of any product. All products and specifications are subject to change without prior written notice.

METRIC LIMITS
ONE PLACE ± 0.3
TWO PLACES ± 0.10
ANGLE $\pm 1^\circ$

DRAWN MWP
CHECKED
APPROVED

DATE 06/19/2012
DATE
DATE

SIZE
A

DRAWING NUMBER:

7000-0003

REV.
A