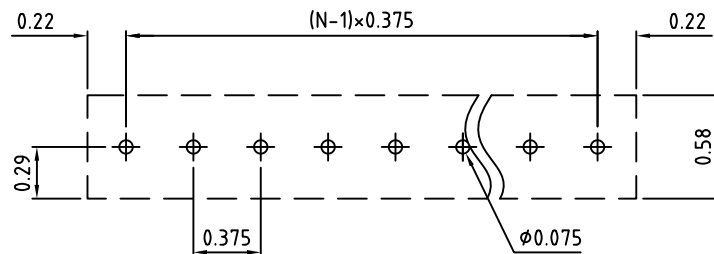
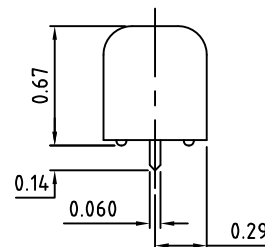
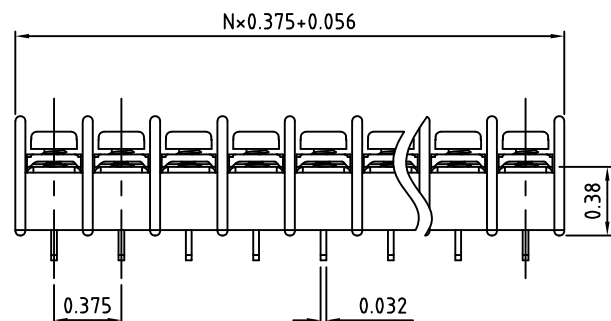


N=Number of Positions



PCB Layout

Material:

Contact Solder Pin:	Brass, Tin Plated
Insulating Body:	Polycarbonate, UL94V-0, Black
Terminal Screw:	See Page 3

Electrical

Voltage Rating:	300 VAC
Current rating:	20 AMPS
Wire Range:	12-24 AWG

Mechanical

Torque:	10.0 lbs-in. Max.
Operating Temperature:	-40°C to +105°C -40°F to +221°F
Soldering Temperature:	260°C, 500°F for 5 seconds max.

Safety Approval: US

Part Number Configuration.

60XX-XX-X-XX-XXXX

Terminal
Options
(Page 2)

Number of
Positions

Mounting
Options
(Page 3)

Screw
Options
(Page 3)

Not Required

Additional Hardware
& Printing Options
For Custom Options Please
Consult our Factory, or
refer to our online Printing
and Hardware Page

Max Number of Positions = 28

Page 1 of 3

UNLESS OTHERWISE
SPECIFIED BREAK ALL
SHARP EDGES AND
DEBURR ALL HOLES

TITLE:

0.375" SPACING, BARRIER BLOCK

LIMITS: UNLESS
OTHERWISE SPECIFIED
HUND. ± 0.2 FRACT. ± 1/64
THOU. ± 0.05 ANGLE ± 1°

SCALE

THIS IS A CONFIDENTIAL DRAWING AND
MUST BE TREATED AS SUCH. NO
DISTRIBUTION IS ALLOWED WITHOUT
WRITTEN APPROVAL BY EBY ELECTRO INC.

EBY Electro Inc.
PLAINVIEW, NY 11803

IMPORTANT DISCLAIMER: All information provided on this print is for reference. Always perform your own tests and acquire samples and further information to determine product suitability. While we make effort to provide accurate information, we cannot be responsible for errors either of omission or typographical. EBY Electro, Inc. assumes no responsibility for the use or suitability of any product. All products and specifications are subject to change without prior written notice.

METRIC LIMITS
ONE PLACE ± 0.3
TWO PLACES ± 0.10
ANGLE ± 1°

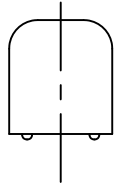
DRAWN JM DATE 07/12/10
CHECKED DATE
APPROVED DATE

SIZE
A

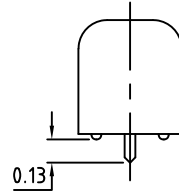
DRAWING NUMBER: 6000-0001

REV.
D

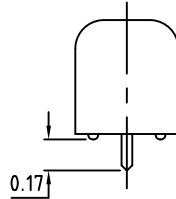
01 - Chassis Mount



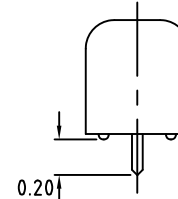
02 - Zero Trim PC



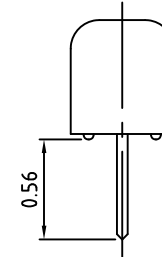
03 - Short PC



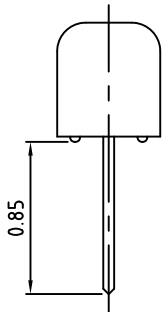
04 - PC



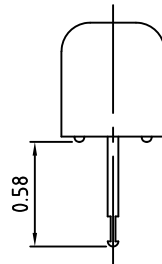
11 - Wire Wrap



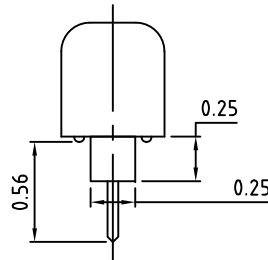
12 - Extended Wire Wrap



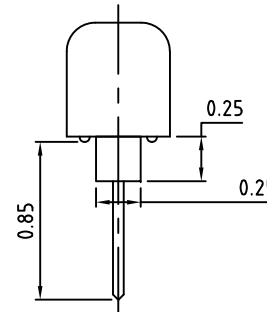
15 - Solder Turret



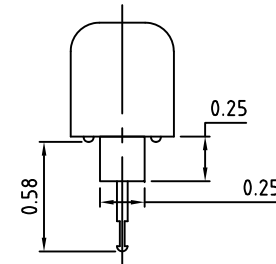
21 - Insulated PC



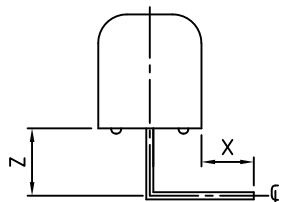
22 - Extended Insulated PC



23 - Insulated Solder Turret




33 - Right Angle



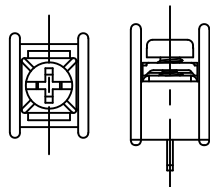
Code	"X" Min	"Z" ± 0.04	EBY Electro offers a wide selection of standard and custom right angle bends for single row PCB mounted terminal blocks. If the exact bend you require is not shown, contact us. Our unique right Angle Manufacturing Process allows any type of bend for the same price as a standard bend. we will give you exactly what you need, the first time and every time.
RA02	0.10"	0.19"	
RA04	0.15"	0.14"	
RA06	0.20"	0.09"	
RA08	0.10"	0.48"	
RA10	0.15"	0.43"	
RA12	0.20"	0.38"	

Terminal
Options

UNLESS OTHERWISE SPECIFIED BREAK ALL SHARP EDGES AND DEBURR ALL HOLES		TITLE: Part Number Configuration for 6000 Series	
LIMITS: UNLESS OTHERWISE SPECIFIED HUND. ± 0.02 THOU. ± 0.005	FRACT. $\pm 1/64$ ANGLE $\pm 1^\circ$	SCALE	THIS IS A CONFIDENTIAL DRAWING AND MUST BE TREATED AS SUCH. NO DISTRIBUTION IS ALLOWED WITHOUT WRITTEN APPROVAL BY EBY ELECTRO INC.
DRAWN <u>JM</u> CHECKED _____ APPROVED _____		DATE <u>07/12/10</u> DATE _____ DATE _____	SIZE <u>A</u> DRAWING NUMBER: <u>6000-0002</u>
REV. <u>D</u>			

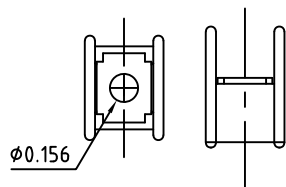
Mounting Options

N - No Mounting Ends

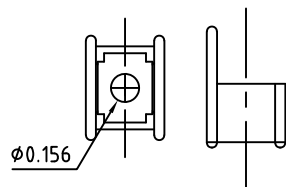


Available Screw Options

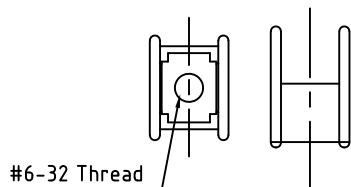
W - $\phi 0.156$ " Mounting Plate with End Barriers



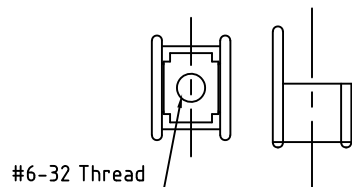
C - $\phi 0.156$ " Mounting Plate without End Barriers



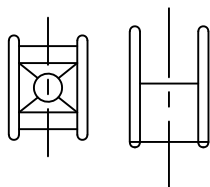
M - #6-32 Mounting Plate with End Barriers



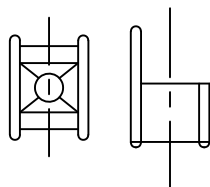
I - #6-32 Mounting Plate without End Barriers



H - No Mounting Plate with End Barriers



K - No Mounting Plate without End Barriers



- 00 - No Screws
- 01 - Steel, Zinc Plated
- 02 - Steel, Zinc Plated, w/ Washer
- 03 - Brass, Nickel Plated
- 04 - Brass, Nickel Plated, w/ Washer
- 05 - Stainless Steel, Phillips Head
- 11 - Steel, Zinc Plated, Captive
- 12 - Steel, Zinc Plated, Captive, w/ Washer
- 13 - Brass, Nickel Plated, Captive
- 14 - Brass, Nickel Plated, Captive, w/ Washer
- 21 - Steel, Zinc Plated, Captive, Wire Ready
- 22 - Steel, Zinc Plated, Captive, Wire Ready, w/ Washer
- 23 - Brass, Nickel Plated, Captive, Wire Ready
- 24 - Brass, Nickel Plated, Captive, Wire Ready, w/ Washer
- 46 - Steel, Zinc Plated, Thread Interrupt, Wire Ready, w/ Washer

Page 3 of 3

UNLESS OTHERWISE SPECIFIED BREAK ALL SHARP EDGES AND DEBURR ALL HOLES

TITLE:

Part Number Configuration for 6000 Series

LIMITS: UNLESS OTHERWISE SPECIFIED
HUND. ± 0.02 FRACT. $\pm 1/64$
THOU. ± 0.005 ANGLE $\pm 1^\circ$

SCALE

THIS IS A CONFIDENTIAL DRAWING AND MUST BE TREATED AS SUCH. NO DISTRIBUTION IS ALLOWED WITHOUT WRITTEN APPROVAL BY EBY ELECTRO INC.

EBY Electro Inc.
PLAINVIEW, NY 11803

IMPORTANT DISCLAIMER: All information provided on this print is for reference. Always perform your own tests and acquire samples and further information to determine product suitability. While we make effort to provide accurate information, we cannot be responsible for errors either of omission or typographical. EBY Electro, Inc. assumes no responsibility for the use or suitability of any product. All products and specifications are subject to change without prior written notice.

METRIC LIMITS
ONE PLACE ± 0.3
TWO PLACES ± 0.10
ANGLE $\pm 1^\circ$

DRAWN JM
CHECKED _____
APPROVED _____

DATE 07/12/10
DATE _____
DATE _____

SIZE
A

DRAWING NUMBER: 6000-0003

REV.
D