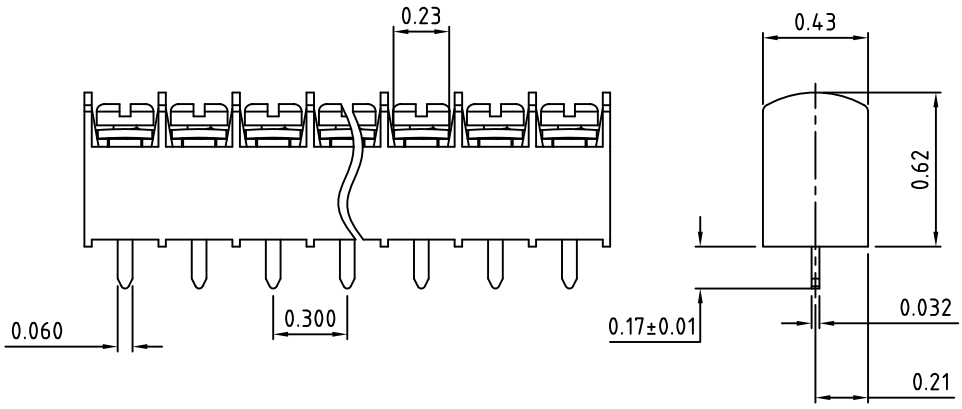
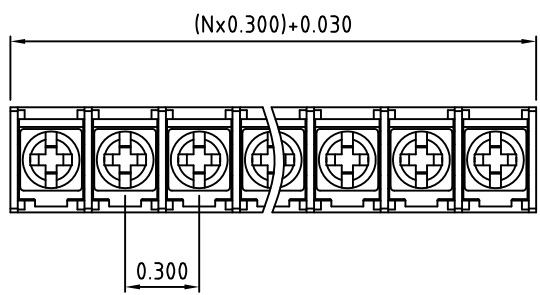


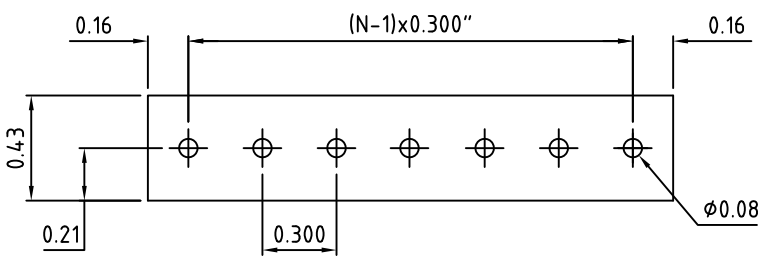
RoHS Compliant

Rev.	ECO#	Date	By
B	1102-0216	02/25/16	AJT

Material:	
Contact Solder Pin:	Brass, Tin Plated
Terminal Screw:	#5-40, Steel, Zinc Plated, Phil Slot
Insulating Body:	Thermoplastic, UL94V-0, Black
Electrical	
Voltage Rating:	300 VAC
Current rating:	15 AMPS
Withstand Voltage:	1500 VAC, Test time 60 seconds
Wire Range:	14-22 AWG
Mechanical	
Torque:	7.5 lbs-in Max
Operating Temperature:	-40°C to +120°C -40°F to +248°F
Soldering Temperature:	260°C, 500°F for 5 seconds max.
Safety Approval:	UL US

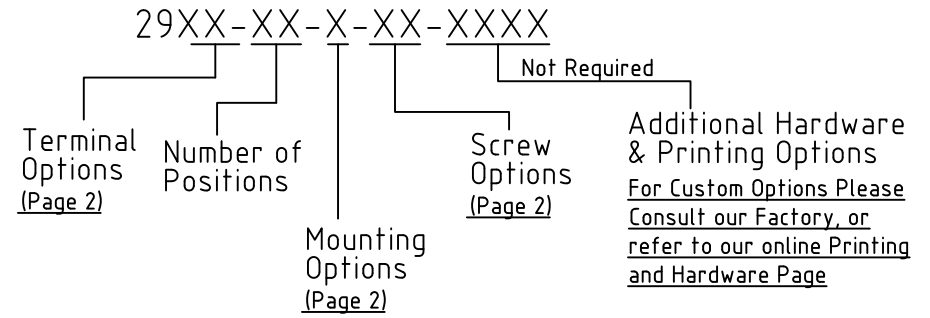


N=Number of Positions



P.C.B. Layout

Part Number Configuration



Max Number of Positions = 20


UNLESS OTHERWISE SPECIFIED BREAK ALL SHARP EDGES AND DEBURR ALL HOLES

TITLE: 0.300" SPACING, BARRIER TERMINAL BLOCK

LIMITS: UNLESS OTHERWISE SPECIFIED HUND.±0.02 FRACT.±1/64 THOU.±0.005 ANGLE±1°	SCALE	THIS IS A CONFIDENTIAL DRAWING AND MUST BE TREATED AS SUCH. NO DISTRIBUTION IS ALLOWED WITHOUT WRITTEN APPROVAL BY EBYS ELECTRO INC.	<b>EBY</b> Electro Inc. PLAINVIEW, NY 11803
--	-------	--	--

IMPORTANT DISCLAIMER: All information provided on this print is for reference. Always perform your own tests and acquire samples and further information to determine product suitability. While we make effort to provide accurate information, we cannot be responsible for errors either of omission or typographical. EBYS Electro, Inc. assumes no responsibility for the use or suitability of any product. All products and specifications are subject to change without prior written notice.

METRIC LIMITS ONE PLACE ±0.3 TWO PLACES ±0.10 ANGLE ±1°	DRAWN JM CHECKED _____ APPROVED _____	DATE 11/17/10 DATE _____ DATE _____	SIZE A	DRAWING NUMBER: 2900-0001	REV. B
--	---	---	--------	------------------------------	--------

 RoHS Compliant

Rev.

ECO#

Date

By

B

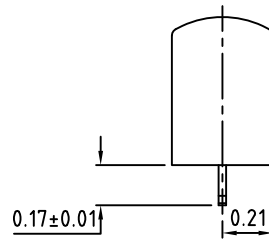
1102-0216

02/29/16

AJT

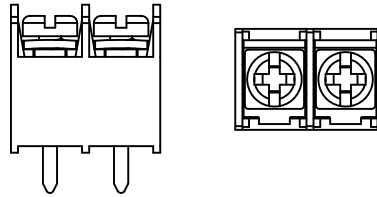
Terminal Options

02 - PC



N - No Mounting Ends

Mounting Options



Available Screw Options

- 02 - Steel, Zinc Plated, w/ Washer
- 22 - Steel, Zinc Plated, Captive, Wire Ready, w/ Washer
- 46 - Steel, Zinc Plated, Thread Interrupt, Wire Ready, w/ Washer
- 52 - Stainless Steel, w/ Washer

UNLESS OTHERWISE SPECIFIED BREAK ALL SHARP EDGES AND DEBURR ALL HOLES

TITLE: Part Number Configuration for 2900 Series

LIMITS: UNLESS OTHERWISE SPECIFIED  
HUND. ±.02 FRACT. ±1/64  
THOU. ±.005 ANGLE ±1°

SCALE THIS IS A CONFIDENTIAL DRAWING AND MUST BE TREATED AS SUCH. NO DISTRIBUTION IS ALLOWED WITHOUT WRITTEN APPROVAL BY EBY ELECTRO INC.



IMPORTANT DISCLAIMER: All information provided on this print is for reference. Always perform your own tests and acquire samples and further information to determine product suitability. While we make effort to provide accurate information, we cannot be responsible for errors either of omission or typographical. EBY Electro, Inc. assumes no responsibility for the use or suitability of any product. All products and specifications are subject to change without prior written notice.

METRIC LIMITS  
ONE PLACE ±0.3  
TWO PLACES ±0.10  
ANGLE ±1°

DRAWN	JM	DATE	11/17/10
CHECKED		DATE	
APPROVED		DATE	

SIZE  
A

DRAWING NUMBER:  
2900-0002

REV.  
B