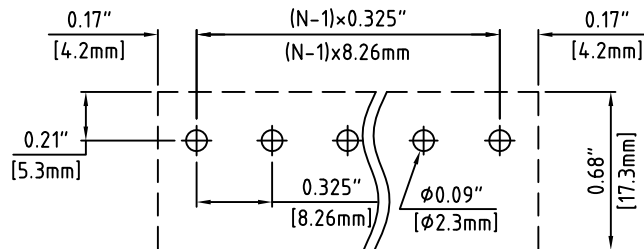
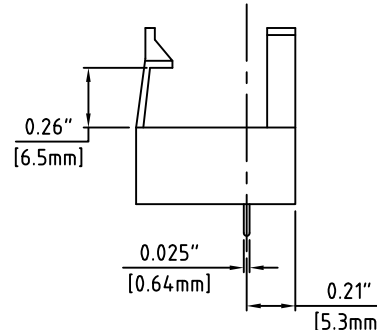


N=Number of Positions



PCB Layout



| Material: | |
|------------------------|------------------------------------|
| Contact Solder Pin: | Brass, Tin Plated |
| Insulating Body: | Polyamide, UL94V-0, Black |
| Electrical | |
| Voltage Rating: | 300 VAC |
| Current rating: | 15 AMPS |
| Mechanical | |
| Operating Temperature: | -40°C to +105°C -40°F to +221°F |
| Soldering Temperature: | 260°C, 500°F for 5 seconds max. |
| Safety Approval: | UL US |

Part Number Configuration.

SK5000-XX

Number of Positions

Max Number of Positions = 16

UNLESS OTHERWISE SPECIFIED BREAK ALL SHARP EDGES AND DEBURR ALL HOLES

TITLE: 0.325" SPACING, BARRIER BLOCK SOCKET FOR USE WITH THE 5000 & TB5 SERIES

| | | | |
|--|-------|--|--|
| LIMITS: UNLESS OTHERWISE SPECIFIED HUND.±.02 FRACT.±1/64 THOU.±.005 ANGLE±1° | SCALE | THIS IS A CONFIDENTIAL DRAWING AND MUSTBE TREATED AS SUCH. NO DISTRIBUTION IS ALLOWED WITHOUT WRITTEN APPROVAL BY EBY ELECTRO INC. | EBY Electro Inc. PLAINVIEW, NY 11803 |
|--|-------|--|--|

IMPORTANT DISCLAIMER: All information provided on this print is for reference. Always perform your own tests and acquire samples and further information to determine product suitability. While we make effort to provide accurate information, we cannot be responsible for errors either of omission or typographical. EBY Electro, Inc. assumes no responsibility for the use or suitability of any product. All products and specifications are subject to change without prior written notice.

METRIC LIMITS
ONE PLACE ±0.3
TWO PLACES ±0.10
ANGLE ± 1°

DRAWN JM DATE 11/02/10
CHECKED DATE
APPROVED DATE

SIZE
A

DRAWING NUMBER: SK5000-0001 REV.