

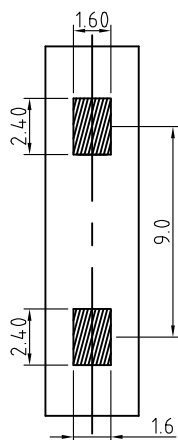
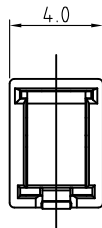
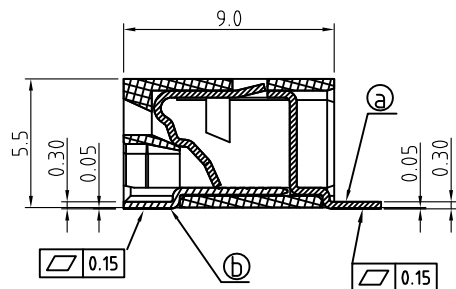
Pb RoHS Compliant

Rev.

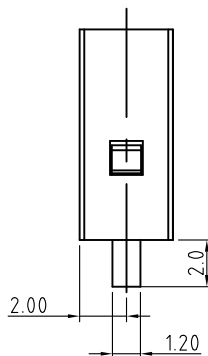
ECO#

Date

By



P.C.B. LAYOUT



Material:	
Contact Solder Pin:	a) PhBz, Matte Tin plated (hi-temp) b) Brass, Matte Tin plated(hi-temp)
Insulating Body:	LCP, UL94V-0
Electrical	
Voltage Rating:	300 VAC
Current rating:	9 AMPS
Withstand Voltage:	1500 VAC, Test time 60 seconds
Wire Range:	18-22 AWG
Mechanical	
Operating Temperature:	-45°C to +130°C -49°F to +266°F
Soldering Temperature:	260°C, 500°F for 10 seconds max.
Safety Approval:	CSA US - PENDING

Part Number Configuration.

EB4604-01-X00

Color
 0-Black
 9-White(Pantone 400C)

(Other Color Options Available)
 Please consult Factory

UNLESS OTHERWISE SPECIFIED BREAK ALL SHARP EDGES AND DEBURR ALL HOLES

TITLE: 4.0mm SPACING, LOW PROFILE SURFACE MOUNT BLOCK

LIMITS: UNLESS OTHERWISE SPECIFIED
 HUND.±.02 FRACT.±1/64
 THOU.±.005 ANGLE±1°

SCALE THIS IS A CONFIDENTIAL DRAWING AND MUSTBE TREATED AS SUCH. NO DISTRIBUTION IS ALLOWED WITHOUT WRITTEN APPROVAL BY EB4 ELECTRO INC.



IMPORTANT DISCLAIMER: All information provided on this print is for reference. Always perform your own tests and acquire samples and further information to determine product suitability. While we make effort to provide accurate information, we cannot be responsible for errors either of omission or typographical. EB4 Electro, Inc. assumes no responsibility for the use or suitability of any product. All products and specifications are subject to change without prior written notice.

METRIC LIMITS
 ONE PLACE ±0.3
 TWO PLACES ±0.10
 ANGLE ± 1°

DRAWN AJT DATE 07/18/14
 CHECKED DATE
 APPROVED DATE

SIZE A

DRAWING NUMBER: EB4604-01-X00

REV.