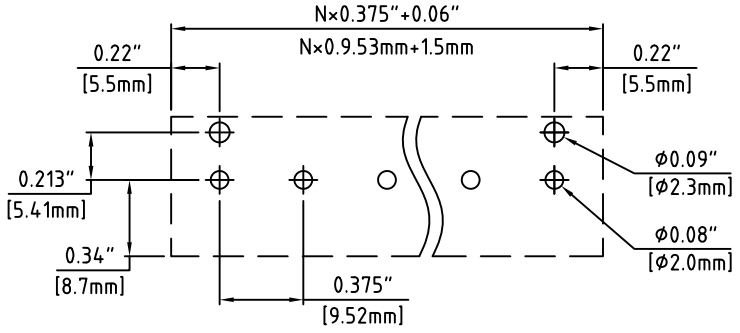
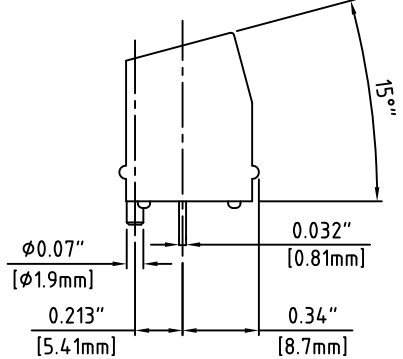
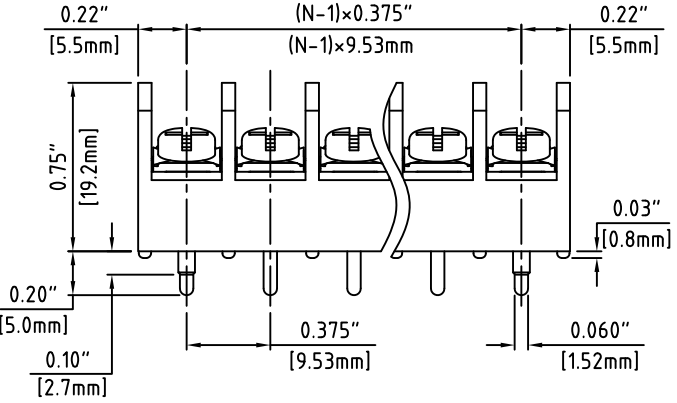


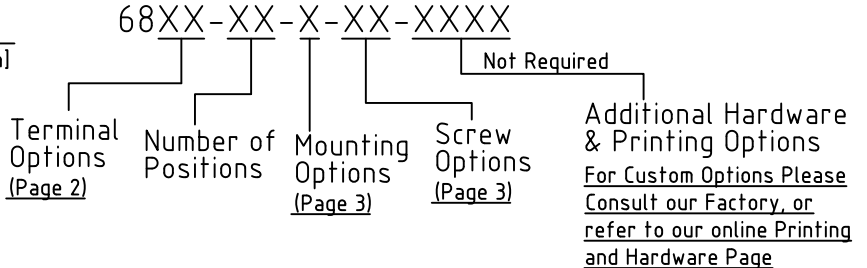
N=Number of Positions



PCB LAYOUT

Material:	
Contact Solder Pin:	Brass, Tin Plated
Insulating Body:	Polyamide, UL94V-0, Black
Terminal Screw:	#6-32, Combo Head
Electrical	
Voltage Rating:	300 VAC
Current rating:	20 AMPS
Wire Range:	12-24 AWG
Withstand Voltage:	1500 VAC, Test time 60 seconds
Mechanical	
Torque:	10.0 lbs-in. Max.
Operating Temperature:	-40°C to +105°C -40°F to +221°F
Soldering Temperature:	260°C, 500°F for 5 seconds max.
Safety Approval:	UL US

Part Number Configuration.



max Number of Positions = 15

UNLESS OTHERWISE SPECIFIED BREAK ALL SHARP EDGES AND DEBURR ALL HOLES	TITLE: <b>0.375" SPACING, BARRIER BLOCK</b>
---	--

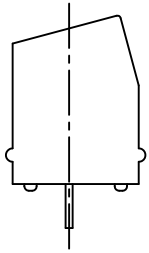
LIMITS: UNLESS OTHERWISE SPECIFIED HUND.±.02 FRACT.±1/64 THOU.±.005 ANGLE±1°	SCALE	THIS IS A CONFIDENTIAL DRAWING AND MUSTBE TREATED AS SUCH. NO DISTRIBUTION IS ALLOWED WITHOUT WRITTEN APPROVAL BY EBY ELECTRO INC.	<b>EBY</b> Electro Inc. PLAINVIEW, NY 11803
---	-------	--	--

IMPORTANT DISCLAIMER: All information provided on this print is for reference. Always perform your own tests and acquire samples and further information to determine product suitability. While we make effort to provide accurate information, we cannot be responsible for errors either of omission or typographical. EBY Electro, Inc. assumes no responsibility for the use or suitability of any product. All products and specifications are subject to change without prior written notice.

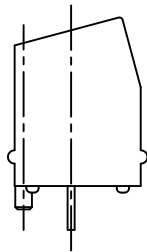
METRIC LIMITS ONE PLACE ±0.3 TWO PLACES ±0.10 ANGLE ±1°	DRAWN <u>JM</u> DATE <u>07/12/10</u>	SIZE <u>A</u>	DRAWING NUMBER: <u>6800-0001</u>	REV.
	CHECKED _____ DATE _____			
	APPROVED _____ DATE _____			

Terminal Options

03 - Without Polarizing Pin

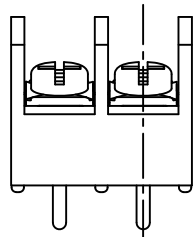
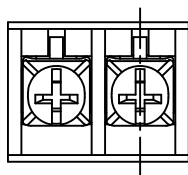


23 - With Polarizing Pins



Terminal Options

N - No Mounting Ends



Available Screw Options

- 00 - No Screws
- 01 - Steel, Zinc Plated,
- 02 - Steel, Zinc plated, w/ Washer
- 03 - Brass, Nickel Plated
- 04 - Brass, Nickel Plated, w/ Washer
- 12 - Steel, Zinc Plated, Captive, w/ Washer
- 14 - Brass, Nickel Plated, Captive, w/ Washer
- 22 - Steel, Zinc Plated, Captive, Wire Ready, w/ Washer
- 24 - Brass, Nickel Plated, Captive, Wire Ready, w/ Washer
- 46 - Steel, Zinc Plated, Thread Interrupt, Wire Ready, w/ Washer

UNLESS OTHERWISE SPECIFIED BREAK ALL SHARP EDGES AND DEBURR ALL HOLES

TITLE:  
Part Number Configuration for 6200 Series

LIMITS: UNLESS OTHERWISE SPECIFIED  
HUND.±.02 FRACT.±1/64  
THOU.±.005 ANGLE±1°

SCALE THIS IS A CONFIDENTIAL DRAWING AND MUSTBE TREATED AS SUCH. NO DISTRIBUTION IS ALLOWED WITHOUT WRITTEN APPROVAL BY EBYP ELECTRO INC.



IMPORTANT DISCLAIMER: All information provided on this print is for reference. Always perform your own tests and acquire samples and further information to determine product suitability. While we make effort to provide accurate information, we cannot be responsible for errors either of omission or typographical. EBYP Electro, Inc. assumes no responsibility for the use or suitability of any product. All products and specifications are subject to change without prior written notice.

METRIC LIMITS ONE PLACE ±0.3 TWO PLACES ±0.10 ANGLE ± 1°	DRAWN <u>JM</u> CHECKED _____ APPROVED _____	DATE <u>07/12/10</u> DATE _____ DATE _____	SIZE <b>A</b>	DRAWING NUMBER: <b>6800-0002</b>	REV.
---	--	--	------------------	-------------------------------------	------